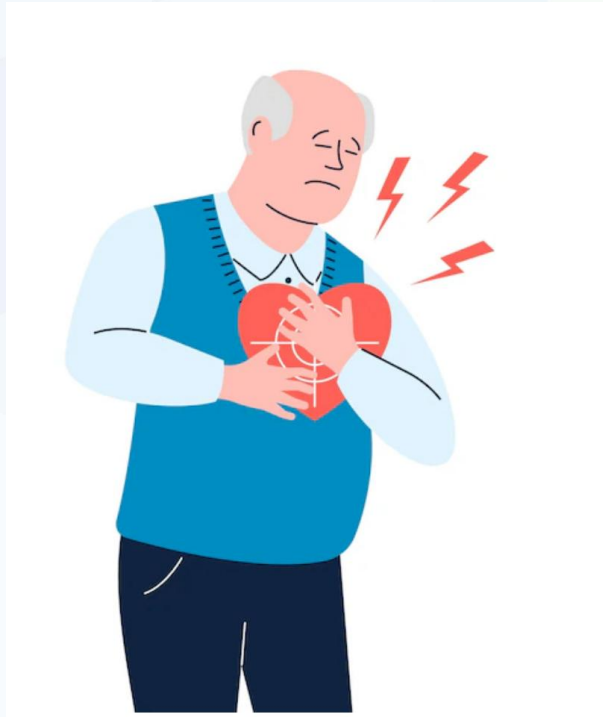


Más allá de la Imagen y el FFR

 @EvaRumiz

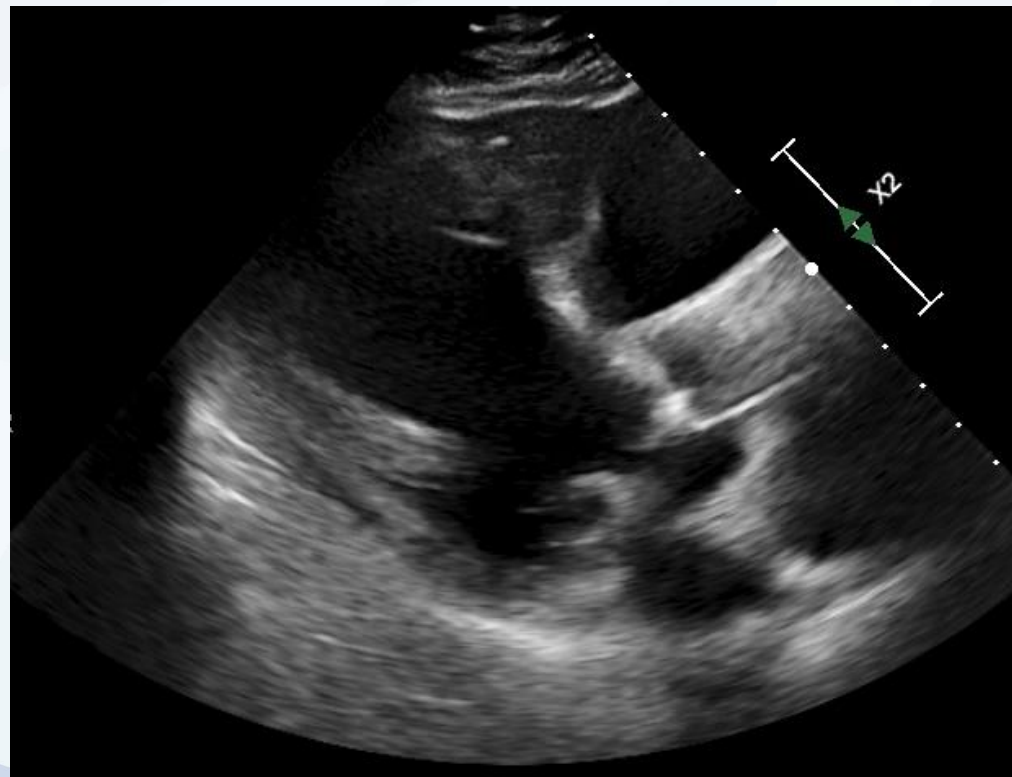
Eva Rumiz González
Hospital General Universitario de Valencia
QuirónSalud Valencia

- Varón 72 años.
- Hipertensión arterial, dislipemia, diabetes mellitus tipo 2.
- Enero **2019** ➔ **IAMCEST Anterior.** ICP DES TCI-ADA.
Lesión moderada en ACD.
- Marzo **2020** ➔ **SCC** Eco estrés positiva: ICP DES ACD proximal.
- Septiembre **2020** ➔ **IAMSEST** RIS ACD proximal DCB.
- Mayo **2021** ➔ **IAMSEST** 2º RIS ACD proximal DES.

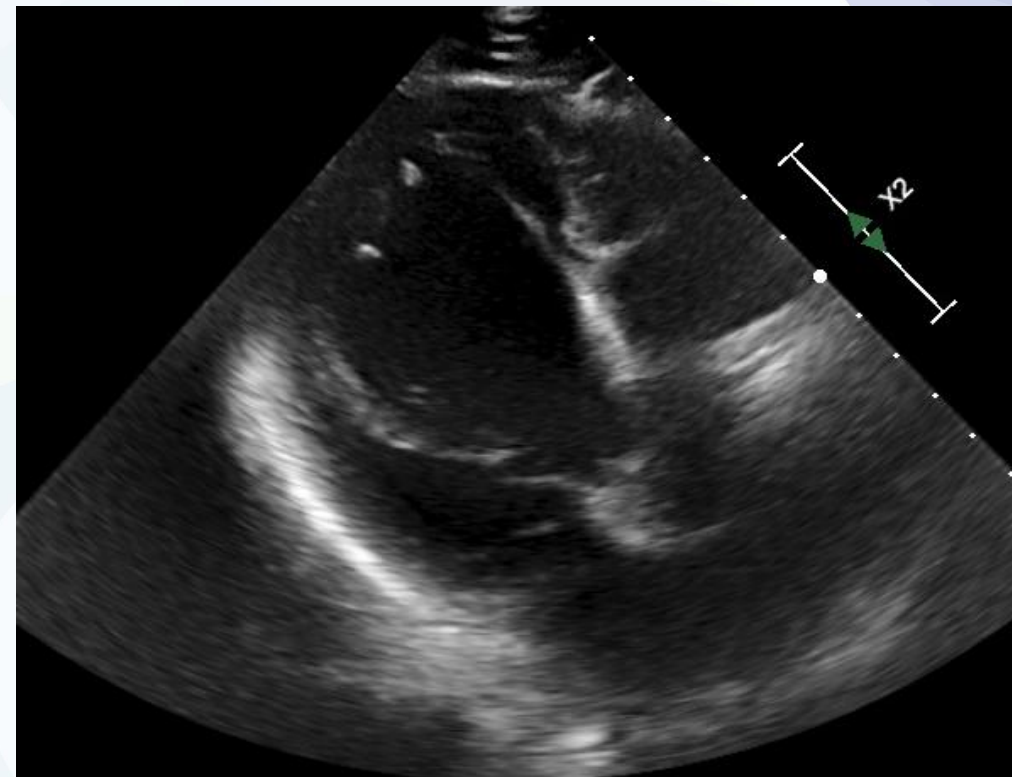


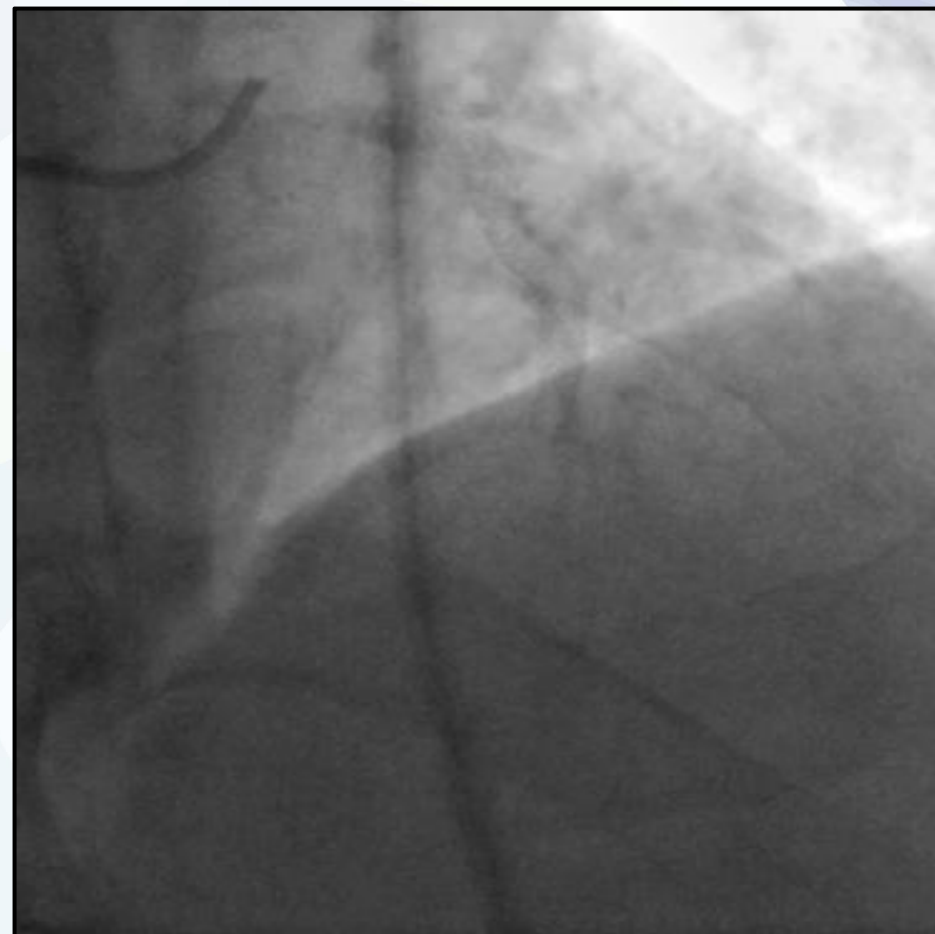
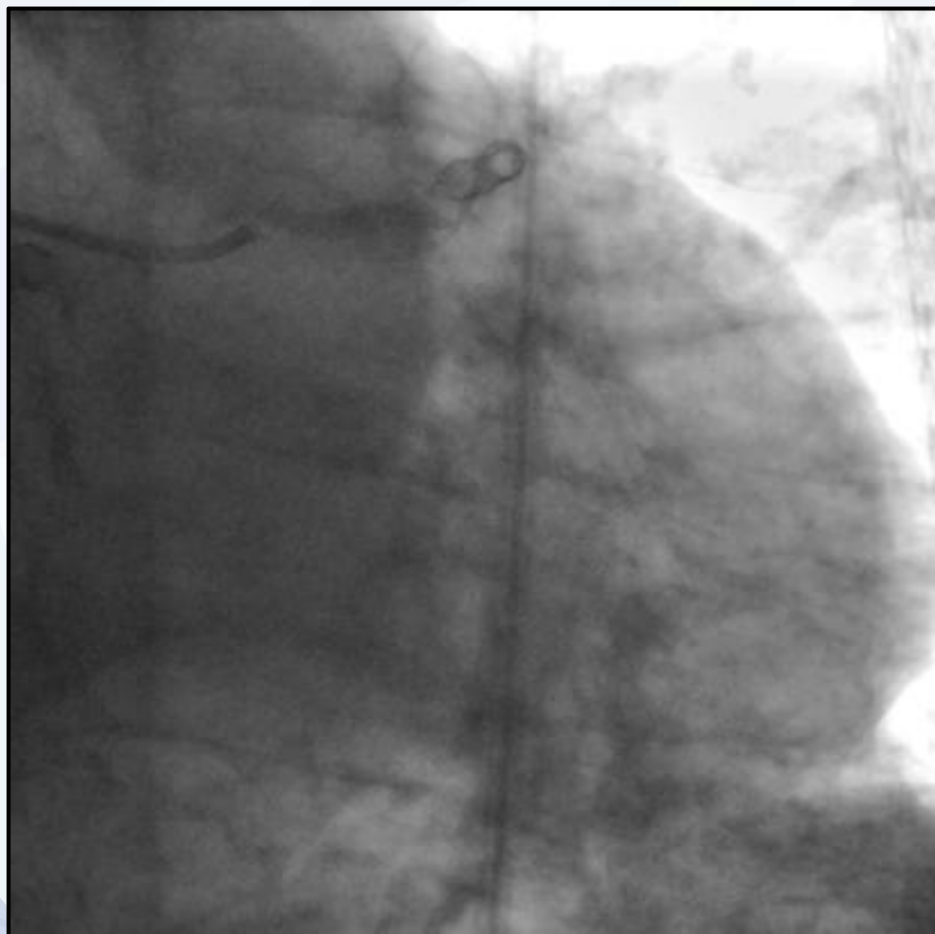
ANGINA PERSISTENTE

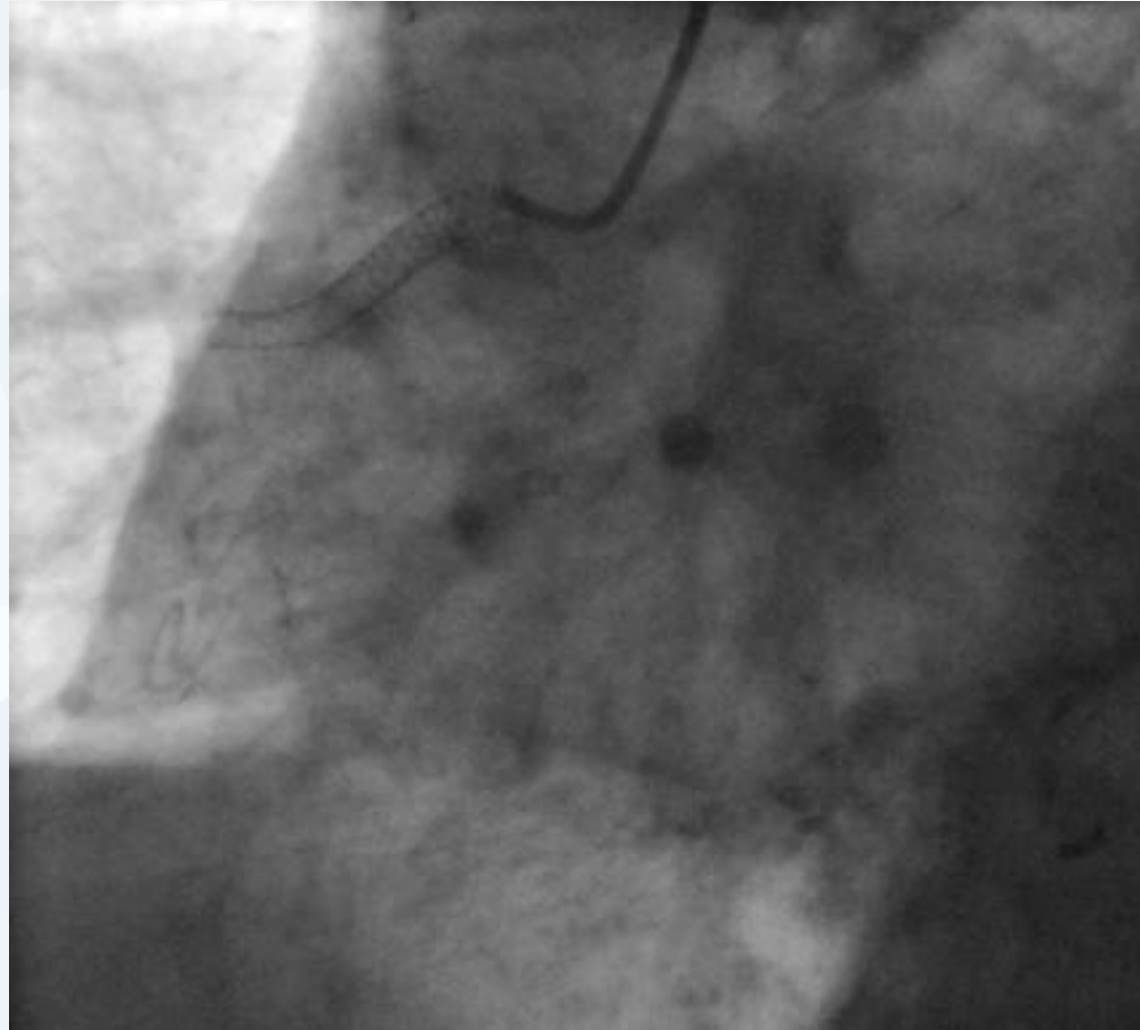
Basal

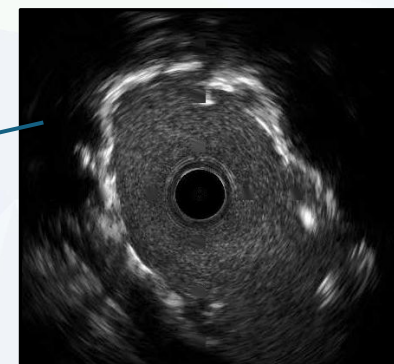
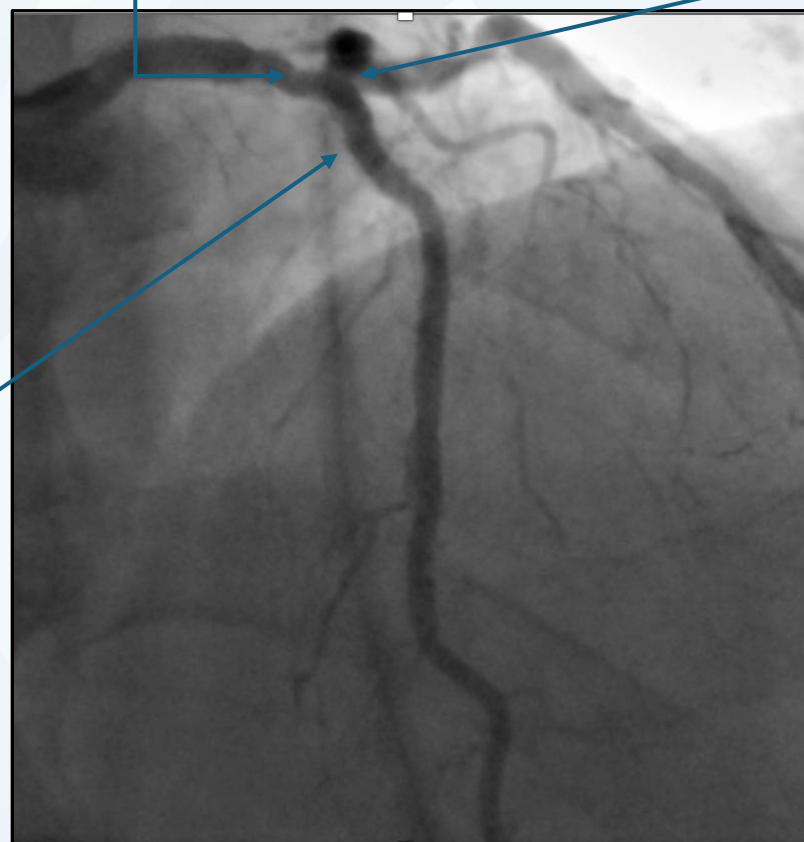
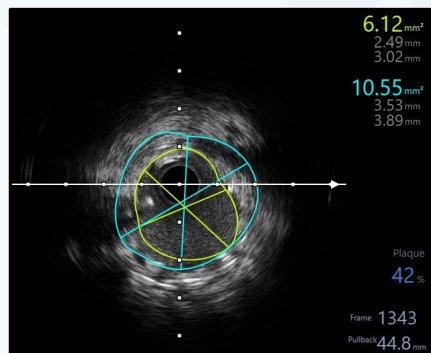
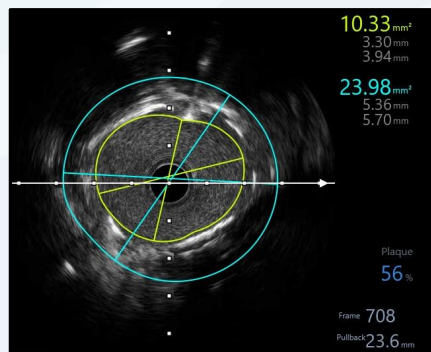


Esfuerzo Max.









Angiografía sin
enfermedad
obstruktiva
"Aparente"



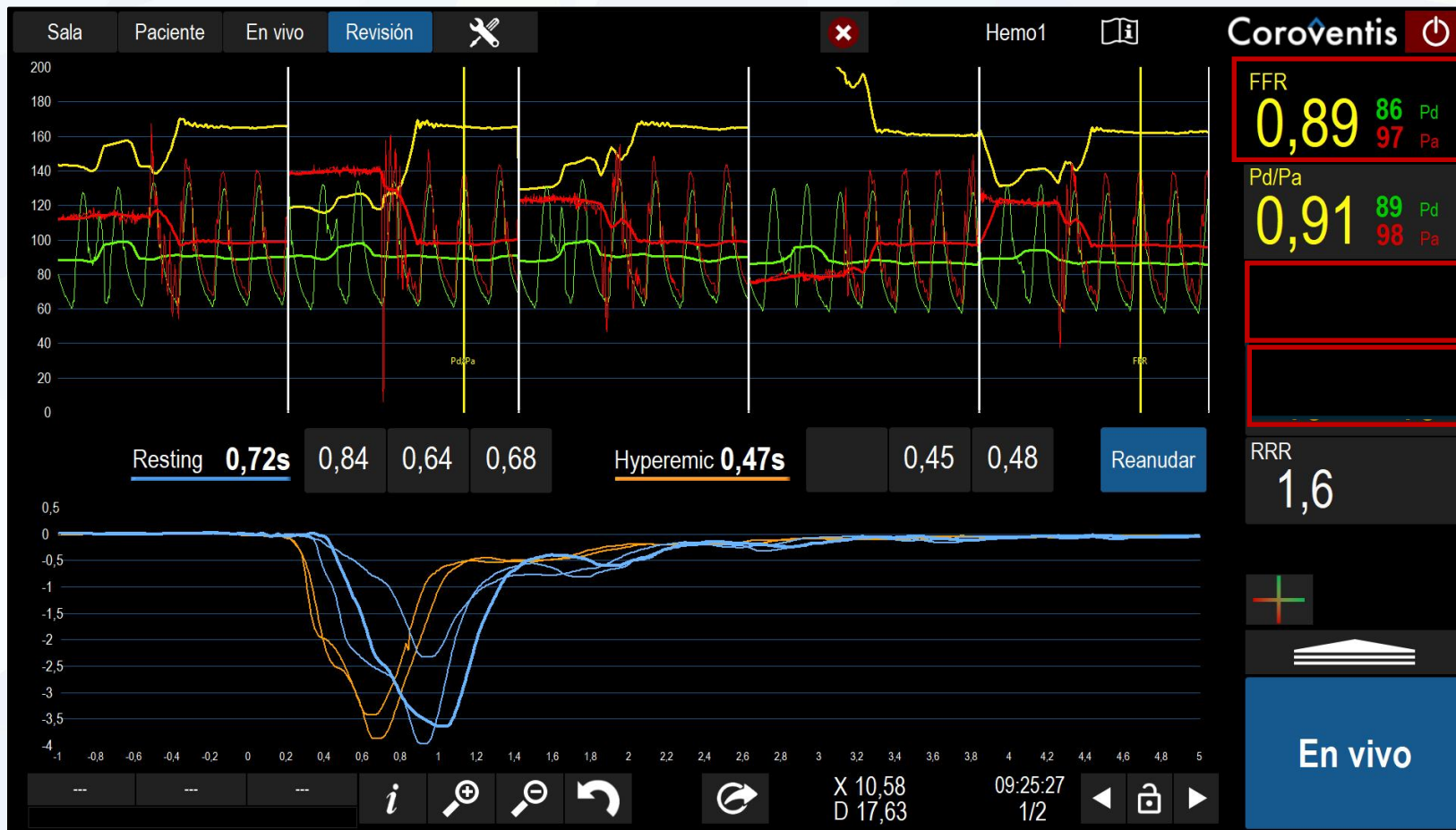
IVUS descarta
presencia
enfermedad
obstruktiva



Estudio
Funcional:
Descartar
isquemia



Estudio Funcional ADA



Estudio Funcional ACX





Diagnóstico

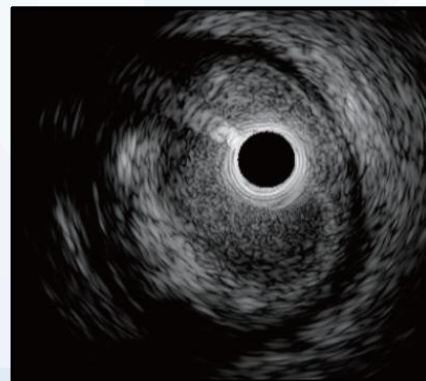
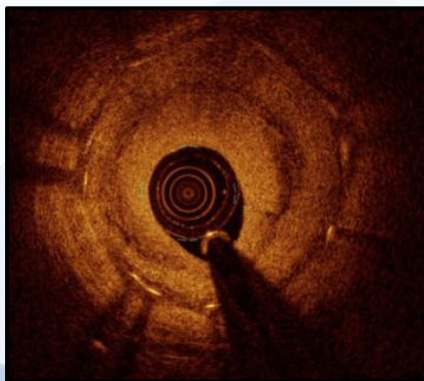
Terapéutico

Pronóstico

ANGINA PERSISTENTE TRAS ICP

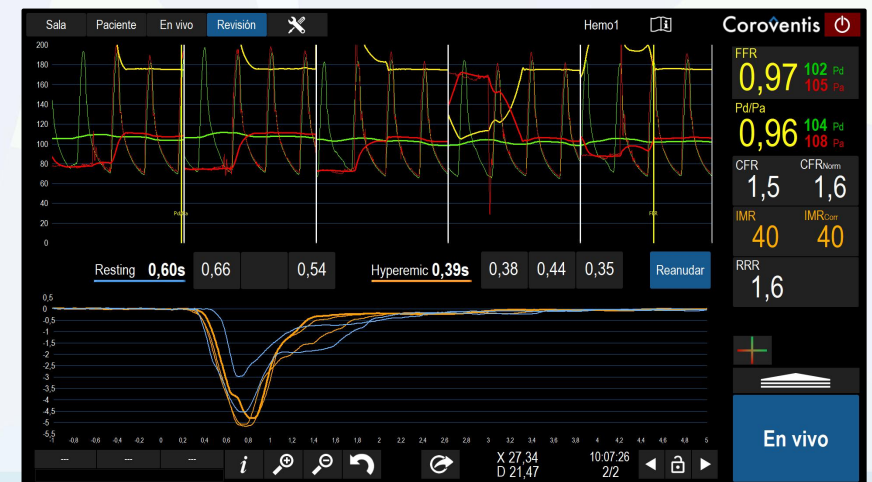
Mecanismos Estructurales

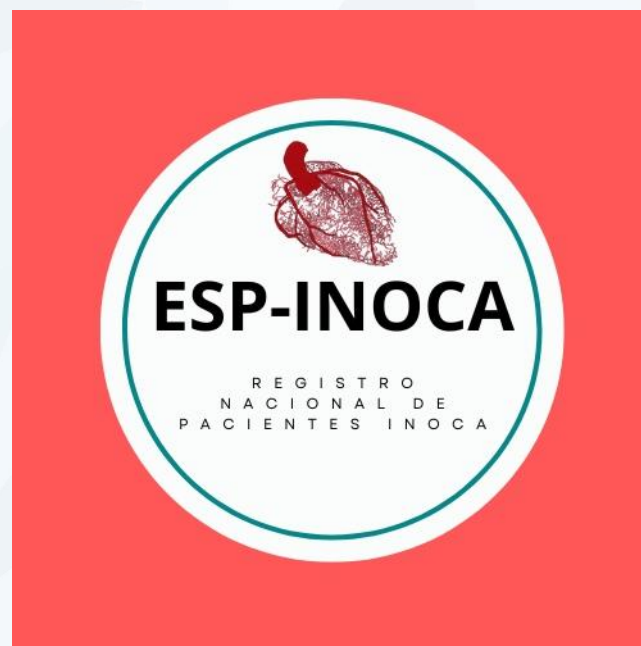
- Reestenosis Intrastent
- Trombosis
- Progresión Arteriosclerosis
- Revascularización incompleta
- Arteriosclerosis difusa



Mecanismos Funcionales

- Vasoespasmo epicárdico
- Disfunción coronaria microvascular





¡¡Muchas Gracias!!